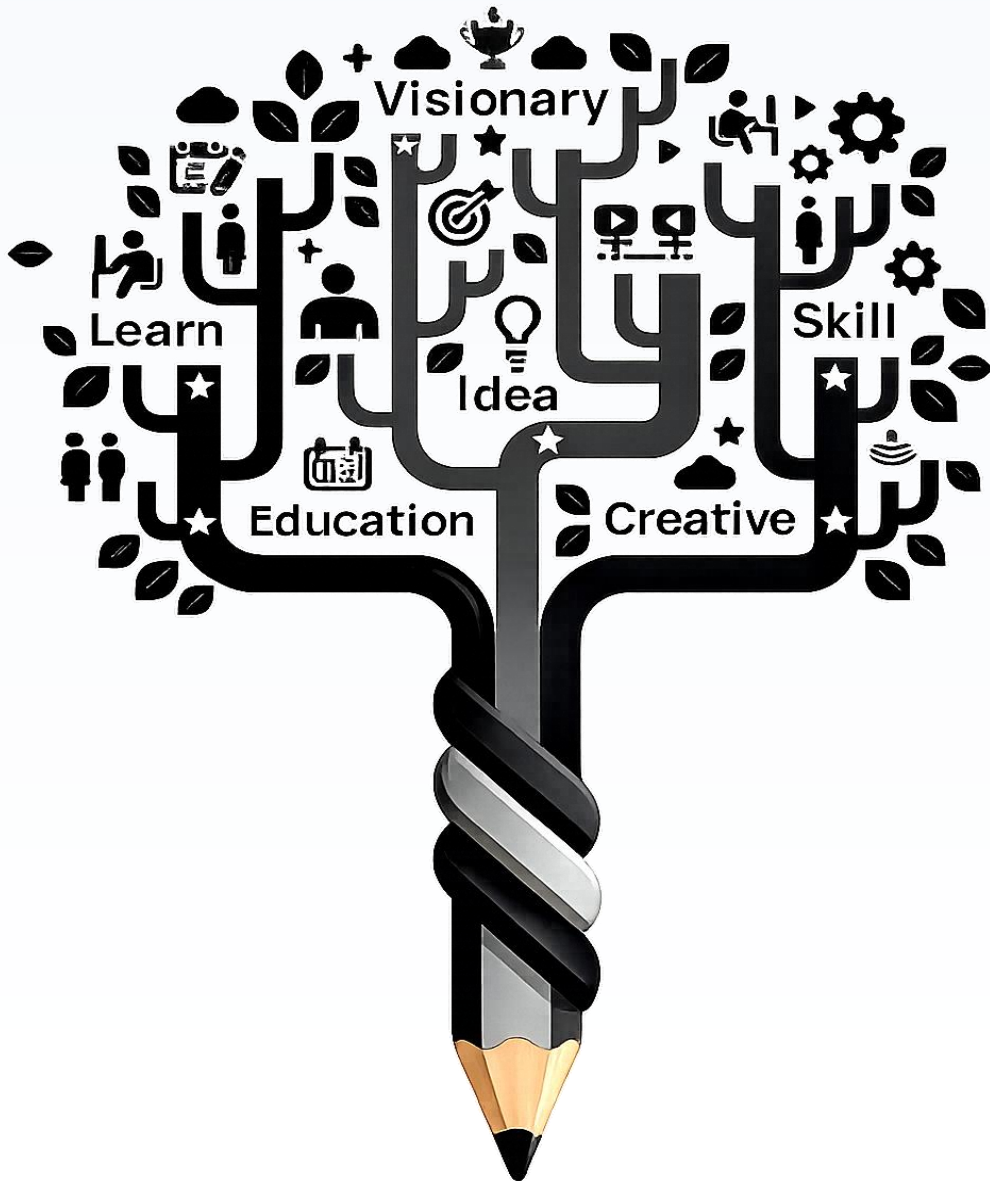


**S D HERITAGE PRIDE SCHOOL
COMPREHENSIVE ACADEMIC PLANNER**

SESSION : 2026-27

CLASS : X



JOURNEY TO EXCELLENCE

“Learning shapes essential life skills by nurturing curiosity, strengthening ambition and transforming effort into excellence empowering students to think critically ,act responsibly and contribute confidently to an ever- evolving world.”

ACADEMIC ITINERARY

CONTENT	PAGE NO.
THE CORE PURPOSE AND OBJECTIVE	1
ENRICHMENT OPPORTUNITIES	2
HOLISTIC DEVELOPMENT FRAMEWORK	3
HOLISTIC HABITS FOR LEARNER DEVELOPMENT	4
RECOMMENDED TEXTBOOKS	5
ANNUAL SYLLABUS	
ENGLISH	6-8
HINDI	9-11
MATHEMATICS	12-14
REASONING	14-15
SCIENCE	15-18
SOCIAL SCIENCE	18-20
ARTIFICIAL INTELLIGENCE	21-22
EK BHARAT SHRESHTHA BHARAT	23-24
ACADEMIC CALENDAR	25-26
HOLIDAYS LIST	27

THE CORE PURPOSE AND OBJECTIVE

The Academic Planner is thoughtfully designed in alignment with the **National Education Policy (NEP) 2020** and the **National Curriculum Framework (NCF)** to support meaningful, structured, and future-ready learning.

It serves as a comprehensive guide for academic planning, enabling students and teachers to organize learning goals, classroom activities, assessments, and reflections in a systematic manner. The planner promotes a shift from rote learning to competency-based and experiential learning, encouraging students to understand concepts deeply and apply knowledge in real-life contexts.

A strong emphasis is placed on **Subject Enrichment Activities (SEA)**, **Experiential Learning Acquisition (ELA)**, and **Art Integrated Learning (AIL)**, which are seamlessly integrated into the curriculum to foster hands-on learning, creativity, aesthetic sensibility, critical thinking, and problem-solving skills.

The planner supports flexible teaching-learning practices, digital integration, inclusive education, and holistic development. Through continuous feedback, reflection, and month-wise planning, it aims to nurture confident, responsible, and lifelong learners prepared for academic excellence and future challenges.

ENRICHMENT OPPORTUNITIES WITHIN THE CURRICULUM

Learning at our school is designed to extend beyond textbooks and classrooms, offering students enriching experiences that nurture curiosity, creativity, competence, and confidence. The curriculum integrates meaningful opportunities that promote active engagement, practical application, and holistic skill development in alignment with the vision of NEP 2020.

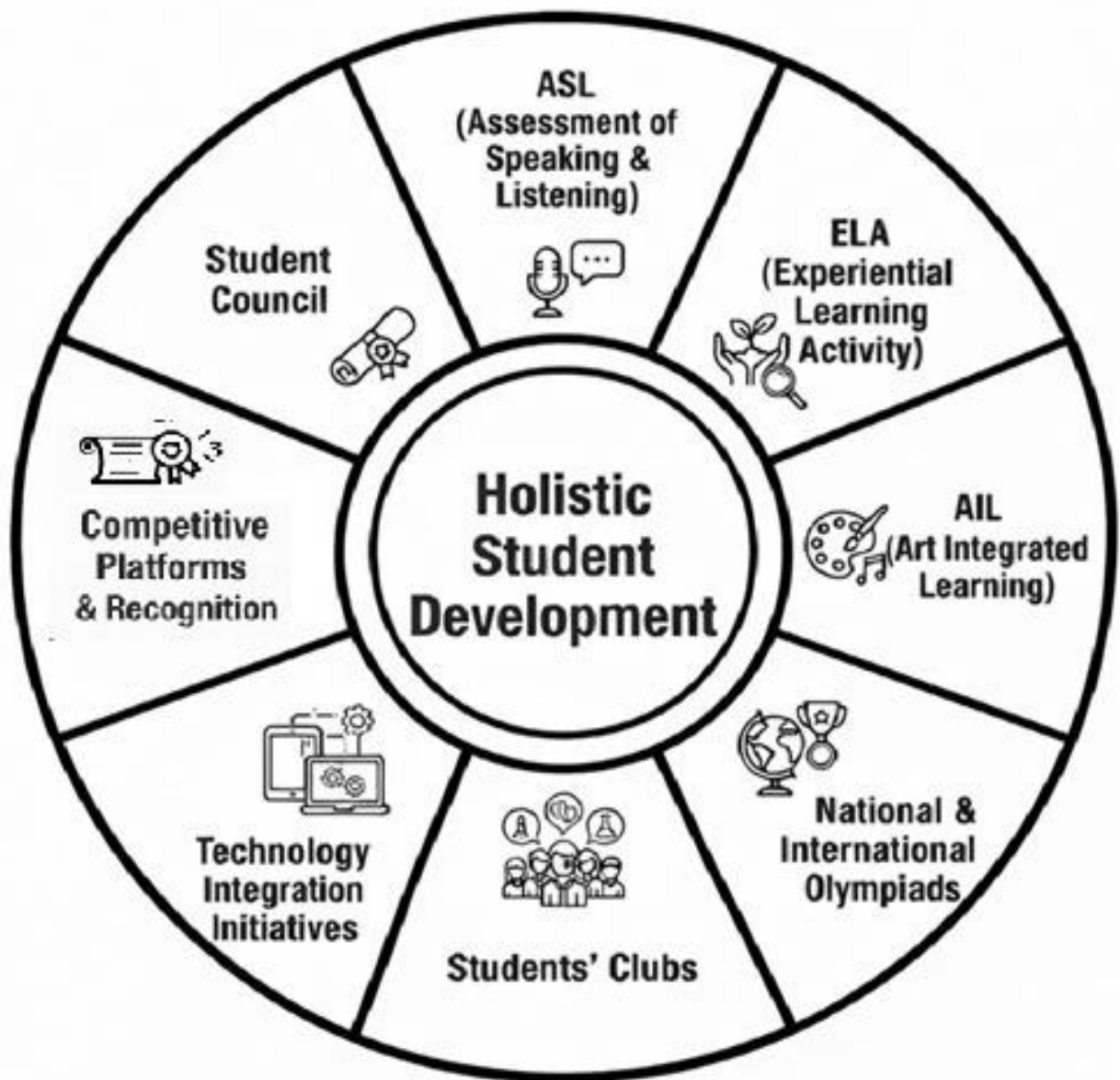
Students are provided with opportunities to develop academic understanding along with essential life skills through:

- **Project-Based and Inquiry-Based Learning:** Inquiry, collaboration, creativity, and presentation through real-world and interdisciplinary tasks.
- **Experiential and Hands-on Learning:** Hands-on activities, experiments, field visits, and practical exposure.
- **Art Integrated Learning (AIL):** Creative expression through visual and performing arts to strengthen concept clarity.
- **Technology and Digital Integration:** Use of digital tools and AI-enabled resources to build digital awareness and skills.
- **Communication and Language Skills:** Focus on speaking, listening, reading, writing, and vocabulary development.
- **Curricular and Co-curricular Engagement:** Building empathy, resilience, teamwork, leadership, and decision-making skills.
- **Environmental Awareness:** Promoting sustainability, conservation, and responsibility towards nature.
- **Co-curricular Engagement:** Participation in clubs, houses, competitions, sports, and community service.

These opportunities ensure holistic, learner-centric development and prepare students to become confident, adaptable, and responsible individuals.

Holistic Development Framework: Empowering Students Beyond Academics

At SDHPS, we are committed to maintaining high standards of excellence by nurturing every dimension of a child's development. Our student development initiatives are designed to complement academic learning while promoting confidence, competence, and character.



Holistic Habits for Learner Development

1



REGULARITY & PUNCTUALITY

Attend classes daily and arrive on time.

2

PREPAREDNESS FOR LEARNING

Bring necessary materials and be ready to engage.



3



PERSONAL HYGIENE & HEALTH AWARENESS

Practice cleanliness and prioritize well-being.

4

COMMUNICATION & SPEAKING SKILLS

Express thoughts clearly and listen actively.



5



HOMEWORK & SELF-STUDY DISCIPLINE

Complete assignments and review lessons consistently.

6

POSITIVE BEHAVIOUR & VALUES

Show respect, kindness, and responsibility.



7



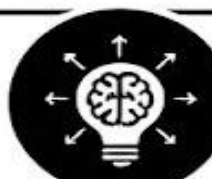
PERSONALITY & CONFIDENCE BUILDING

Believe in abilities and embrace challenges.

8

CONCEPT CLARITY, REFLECTION & FEEDBACK

Understand ideas, reflect on learning, and seek improvement.



SCHOOL RECOMMENDED TEXTBOOKS – CLASS X



English

NCERT Textbooks

1. Footprint Without Feet
2. First Flight

Applied English Grammar and Composition



Hindi

NCERT – क्षितिज

NCERT – कृतिका

विभोर हिंदी व्याकरण



Mathematics

NCERT Textbook

Comprehensive Lab Manual

Reasoning Mastery MTG



Science

NCERT Textbook

Lab Manual – Ultra Bright



Social Science

NCERT Textbooks

1. Contemporary India – II
2. India and Contemporary World – II
3. Democratic Politics – II
4. Economics – II



Artificial Intelligence

Kips Learning

Textbooks are subject to revision as per CBSE and school guidelines.

MONTH/ SUBJECT	ENGLISH (LANGUAGE AND LITERATURE) Subject Code- 184
MARCH	<p>Literature: Prose-1. A Letter To God 2. Nelson Mandela: A Long Walk To Freedom Poetry - 1. Dust of Snow 2. Fire and Ice Supplementary Reader- 1. A Triumph of Surgery 2. A Thief Story Grammar: Tenses, Determiners Writing Skills : Letter to Editor, Analytical Paragraph SEA/ELA : From Hope to action Students will prepare and present a speech (two min.) on the topic: “How Sustainable farming can help farmers avoid losses”. AIL : Nature’s Small Turning Points : Bookmark Creation Students will design a handmade bookmark using imitation of natural motifs (leaf, snowflake, crow) with a quote or line reflecting emotional changes in the Poem- Dust of Snow. Skills Developed- Speaking Skills , Emotional Intelligence, Artistic Skills</p>
APRIL	<p>Literature: Prose -3.Two Stories About Flying 4. From the Diary of Anne Frank Poetry -3. A Tiger In The Zoo, 4. How to Tell Wild Animals. Supplementary Reader- 3. Mid Night Visitor, 4. A Question of Trust Grammar: Subject verb concord Writing Skills : Complaint Letter, Analytical Paragraph SEA/ELA : Discovering Anne : Voices from the Diaries Each Student will select one prominent character trait of Anne Frank (optimism, courage, honesty, curiosity, sensitivity, resilience) Students will prepare a 2 min reflective monologue as if they are Anne Frank. AIL-“Postcard from the Wild”: Seeing the World through an animal’s Eyes Students will imagine themselves as wild animals living in forests, cages, or zoos. They will design a postcard from the animal’s habitat, visually representing its surroundings on the front and writing a short first-person message to humans on the back. Skills Developed: Speaking Skill, Reflective Thinking, Creative Writing Skill.</p>

<p>MAY</p>	<p>Literature: Prose-7. Glimpses of India, 8. Mijbil The Otter, Poetry : 5.The Ball Poem, 6.Amanda, Supplementary Reader: 5. Footprints Without Feet Grammar: Connectors Writing Skills : Letter for placing an order, Analytical Paragraph SEA/ELA : Personal Reflection Journal Students will recall a time they lost something valuable and will frame 4–5 lines about how it felt and what they learned linking it to the poem’s theme of loss and learning to cope. AIL : “Comic Strip: Invisible Trouble” Students will create a comic strip depicting one episode from the story- Foot Prints Without Feet, using visual clues (floating objects, reactions) to show invisibility instead of drawing Griffin. Skills Developed: Story Telling Skill, Critical Thinking, Artistic Expression. Project- Lexicon Chronicles Students will create a portfolio that highlights language skills through poems, interviews, literature reflections, and expressive visual storytelling.</p>
<p>JULY</p>	<p>Literature: 9. Madam Rides The Bus, 10. Sermon at Benares, Poetry: 7.The Trees, 8. Fog Supplementary Reader: 6. The Making of a Scientist Grammar: Direct & Indirect Speech Writing Skills : Enquiry Letter, Analytical Paragraph SEA/ELA : Scientist Profile Students will pick a scientist (living or historical) and create a profile card including: name, field, major discoveries, challenges faced, qualities that helped them to succeed (like perseverance, curiosity) and will associate these qualities with Richard Ebright from the lesson-The Making of a Scientist. AIL : The Wheel of Life (Dharma Chakra Art): Students will draw a large Dharma Chakra (wheel). In each spoke, write one teaching from the chapter: Life is full of suffering, Death is inevitable.... Add illustrations around the wheel (lotus, river, people grieving, Buddha preaching). Skills Developed: Comparative Thinking, Critical and Creative Thinking.</p>
<p>AUGUST</p>	<p>Literature: Prose- 11. The Proposal Poetry: 9. The Tale of Custard The Dragon, Supplementary Reader: 7. The Necklace, 8. Bholi Grammar: Active passive voice Writing Skills: Letter to Editor, Letter for placing an order</p>

<p>AUGUST</p>	<p>SEA/ELA: Class Discussion – Comedy with a Message Students will do discussion on: How arguments create humour in the story, What the play teaches about human behaviour and relationships. Skills Developed: Speaking, Emotional Intelligence , Critical Thinking, Role Playing. REVISION FOR FIRST TERM EXAMS</p>
<p>SEPTEMBER</p>	<p>Supplementary Reader: 7. The Necklace, 8. Bholi Grammar: Integrated Grammar Writing Skills: Letter to Editor, Analytical Paragraph SEA/ELA : Mock Interview with Bholi Students will conduct a mock interview as journalists interviewing Bholi after she stands up to the groom.</p>
<p>OCTOBER</p>	<p>Poetry : 10. For Anne Gregory Supplementary Reader: 10. The Book that saved the Earth. Grammar : Integrated Grammar Writing Skills: Complaint Letter, Letter to Editor AIL :Character in Motion – Freeze Frame Art Students will draw or create paper puppets of the main characters (Lomov, Natalya, and Chubukov) showing their emotions and conflicts during the proposal scene. They can exaggerate expressions to reflect humor and tension. Skills Developed: Visual Storytelling Skill, Artistic Skills, Critical Thinking.</p>
<p>NOVEMBER- FEBRUARY</p>	<p>DOUBT CLASSES, PRACTICE PAPERS & REVISION FOR PREBOARD & BOARD EXAMS</p>
<p>Discussion from Module will be taken parallel to the chapters every month.</p>	



MONTH/ SUBJECT	हिंदी कोर्स-A (002)
मार्च	<p>क्षितिज गद्य खंड : पाठ-10 नेताजी का चश्मा पद्य-खंड: कविता-1 उद्धो तुम हो अति बड़भागी व्याकरण : पाठ-1 रचना के आधार पर वाक्य भेद सृजनात्मक लेखन : अनौपचारिक व औपचारिक पत्र लेखन भाषा संवर्धन गतिविधि -कथन / वस्तु-वाचन शीर्षक: जब चश्मा बोल उठा विद्यार्थी कल्पना करेंगे कि नेताजी का चश्मा स्वयं अपनी कहानी सुना रहा है। वे बताएँगे कि उन्होंने बताया क्या-क्या देखा, लोगों का बदलता दृष्टिकोण और स्वतंत्रता संग्राम से जुड़ी भावनाएँ कैसी थीं। प्रस्तुति मौखिक वाचन के रूप में होगी। कला एकीकृत गतिविधि-भक्ति बनाम ज्ञान : प्रेम की श्रेष्ठता विद्यार्थी इस पद में व्यक्त सगुण भक्ति, प्रेम, विरह और ज्ञान-मार्ग के भावों को प्रतीकात्मक कला के माध्यम से प्रस्तुत करेंगे। वे कोलाज बनाकर कमल, हृदय, दीपक, मस्तक पर मुकुट, पुस्तक जैसे प्रतीकों का प्रयोग करेंगे। प्रत्येक प्रतीक के साथ उसका भावात्मक व सामाजिक अर्थ भी संक्षेप में लिखेंगे। अंत में विद्यार्थी यह संदेश देंगे कि ज्ञान से बढ़कर प्रेम और भक्ति मानव जीवन को सार्थक बनाते हैं। कौशल विकसित :कल्पनाशक्ति, रचनात्मक लेखन, भावात्मक अभिव्यक्ति, आत्मचिंतन</p>
अप्रैल	<p>क्षितिज गद्य-खंड: पाठ-11 बालगोबिन भगत कृतिका : पाठ-1 माता का आँचल व्याकरण : पाठ-2 वाच्य सृजनात्मक लेखन : अनुच्छेद व ई-मेल लेखन भाषा संवर्धन गतिविधि : “मूल्य संवाद – आज के समय में बालगोबिन भगत” छात्र समूहों में यह कल्पना करेंगे कि बालगोबिन भगत आज के समाज में हैं। विद्यार्थी उनके जीवन-मूल्यों को वर्तमान जीवन से जोड़ते हुए संवाद / लघु भूमिका-अभिनय प्रस्तुत करेंगे। कला एकीकृत गतिविधि: “मूल्य-मानचित्र (Value Mind Map)” छात्र बालगोबिन भगत के जीवन से जुड़े प्रमुख मूल्यों—जैसे भक्ति, सादगी, मानवीय संवेदना, सामाजिक समरसता और आत्मानुशासन को पहचानेंगे। इन मूल्यों को Mind Map के रूप में प्रस्तुत करेंगे। अंत में विद्यार्थी अपने मानचित्र का संक्षिप्त मौखिक प्रस्तुतीकरण भी देंगे। कौशल विकसित:रचनात्मक अभिव्यक्ति, भावबोध, साहित्यिक समझ, प्रतीकात्मक सोच, आलोचनात्मक चिंतन, नैतिक मूल्यबोध</p>

<p style="text-align: center;">मई</p>	<p>क्षितिज पद्य-खंड : कविता-5 उत्साह , अट्ट नहीं रही है कृतिका : पाठ-5 मैं क्यों लिखता हूँ? व्याकरण पाठ-3 पद - परिचय सृजनात्मक लेखन: स्ववृत्त व संदेश लेखन भाषा संवर्धन गतिविधि : “डिजिटल दुनिया : सुरक्षित या असुरक्षित? विद्यार्थी साइबर अपराध और इंटरनेट के बढ़ते प्रभाव पर समूहों में चर्चा करेंगे। वाद-विवाद या पोस्टर प्रस्तुति के माध्यम से वे इंटरनेट के सही और जिम्मेदार उपयोग पर अपने विचार व्यक्त करेंगे। छात्र यह भी आत्ममंथन करेंगे कि वे क्या लिखते/साझा करते हैं और क्यों? कला एकीकृत गतिविधि : ‘शब्दों का शहर’ (पद-परिचय आधारित गतिविधि) कक्षा को पाँच समूहों में विभाजित किया जाएगा-संज्ञा नगर, सर्वनाम चौक, क्रिया मार्ग, विशेषण गली और अव्यय पार्क। प्रत्येक समूह अपने निर्धारित पद के अंतर्गत पाँच उपयुक्त शब्द चुनेगा। छात्र उन शब्दों के आधार पर एक छोटा दृश्य, चित्र या पोस्टर तैयार करेंगे। प्रस्तुति के दौरान वे यह स्पष्ट करेंगे कि चुने गए शब्द उसी स्थान के निवासी क्यों हैं ? कौशल विकसित: व्याकरणिक समझ, विश्लेषण क्षमता, भाषा-प्रयोग कौशल, रचनात्मक सोच, सहयोगात्मक अधिगम परियोजना कार्य: साहित्य : बीते कल से आज तक छात्र किसी एक कवि या लेखक का चयन करेंगे उसकी रचनाओं का आज के विषय में उपयोग और भूमिका बताते हुए अपनी परियोजना तैयार करेंगे। शामिल करें: शीर्षक, पोस्टर, नारा, संक्षिप्त विवरण।</p>
<p style="text-align: center;">जुलाई</p>	<p>कला एकीकृत गतिविधि: मुखौटा कला एवं भाव-अभिनय विद्यार्थी राम, लक्ष्मण और परशुराम के Paper Masks / Face Art बनाएँगे। प्रत्येक मुखौटे के भाव—क्रोध, विनम्रता, मर्यादा और आत्मसंयम-को रंगों व रेखाओं से दर्शाया जाएगा। इसके बाद मुखौटे पहनकर मौन-अभिनय के माध्यम से संवाद का भाव प्रस्तुत किया जाएगा। कौशल विकसित: रचनात्मक अभिव्यक्ति, भावात्मक समझ, कल्पनाशीलता, सौंदर्यबोध, संप्रेषण कौशल, गैर-मौखिक अभिव्यक्ति, सहयोगात्मक कार्य। कला एकीकृत गतिविधि: मुखौटा कला एवं भाव-अभिनय विद्यार्थी राम, लक्ष्मण और परशुराम के Paper Masks / Face Art बनाएँगे। प्रत्येक मुखौटे के भाव—क्रोध, विनम्रता, मर्यादा और आत्मसंयम—को रंगों व रेखाओं से दर्शाया जाएगा। इसके बाद मुखौटे पहनकर मौन-अभिनय के माध्यम से संवाद का भाव प्रस्तुत किया जाएगा। कौशल विकसित: रचनात्मक अभिव्यक्ति, भावात्मक समझ, कल्पनाशीलता, सौंदर्यबोध, संप्रेषण कौशल, गैर-मौखिक अभिव्यक्ति, सहयोगात्मक कार्य</p>

<p>अगस्त</p>	<p>क्षितिज पद्य-खंड : कविता-3 यह दंतुरित मुस्कान , फसल, कविता-4 आत्मकथ्य व्याकरण: रचना के आधार पर वाक्य भेद , पद - परिचय(दोहराई) सृजनात्मक लेखन : स्ववृत्त व ई-मेल लेखन (दोहराई) । भाषा संवर्धन गतिविधि : "बीज से फसल तक" विद्यार्थी फसल उत्पादन की सम्पूर्ण प्रक्रिया को समझेंगे तथा किसान के परिश्रम और प्रकृति के सहयोग का महत्व जानेंगे। छात्र बीज, वर्षा, सूर्य, किसान और फसल की भूमिकाएँ निभाएँगे। संकेतों और अभिनय के माध्यम से 'बीज से फसल तक की यात्रा' को मंचित किया जाएगा । अर्धवार्षिक परीक्षा के लिए दोहराई</p>
<p>सितंबर</p>	<p>गद्य-खंड : पाठ -12 लखनवी अंदाज़ कला एकीकृत गतिविधि: लेखन-शैली - लखनवी अंदाज़ : शालीनता का विज्ञापन विद्यार्थी लखनवी तहज़ीब और शालीन भाषा-शैली से प्रेरित होकर एक रचनात्मक विज्ञापन तैयार करेंगे। वे भाषा की मधुरता, शिष्टाचार और सांस्कृतिक सौंदर्य को आधुनिक मीडिया के संदर्भ में प्रस्तुत करेंगे। कौशल विकसित:रचनात्मक लेखन, भाषा-शैली की समझ, शिष्ट एवं प्रभावी संप्रेषण, सांस्कृतिक बोध, कल्पनाशीलता, सौंदर्यबोध, प्रस्तुति कौशल</p>
<p>अक्टूबर</p>	<p>क्षितिज गद्य-खंड : पाठ-17 संस्कृति कृतिका : पाठ-3 साना - साना हाथ जोड़ि पद्य-खंड : कविता-10 संगतकार व्याकरण : अलंकार, वाच्य (दोहराई) सृजनात्मक लेखन: औपचारिक व अनौपचारिक पत्र (दोहराई) भाषा संवर्धन गतिविधि : 'मेरी संस्कृति – मेरी नज़र से' छात्र स्वयं को एक सांस्कृतिक पत्रकार या टैबल व्लॉगर के रूप में दिखाएँगे। वे अपने आसपास के किसी स्थानीय सांस्कृतिक स्थल, परंपरा, लोककला, पर्व या रीति-रिवाज का चयन करेंगे और उस पर Mini Script या Photo Story तैयार करेंगे। कला एकीकृत गतिविधि: प्रतीकात्मक स्कल्पचर एवं फिंगर आर्ट' विद्यार्थी 'साना-साना हाथ' को केंद्र में रखते हुए Clay Art / Paper Sculpture / Finger Art तैयार करेंगे।इन कलाकृतियों में छोटे हाथों के माध्यम से संवेदना, करुणा, मानवीय जुड़ाव और सामाजिक असमानता को प्रतीकों द्वारा दर्शाया जाएगा। कौशल विकसित- रचनात्मक अभिव्यक्ति, प्रतीकात्मक सोच, संवेदनशीलता एवं सहानुभूति, सामाजिक चेतना, कल्पनाशीलता, सूक्ष्म मोटर कौशल, सौंदर्यबोध, सहयोगात्मक कार्य</p>
<p>NOVEMBER- FEBRUARY</p>	<p>DOUBT CLASSES, PRACTICE PAPERS & REVISION FOR PREBOARD & BOARD EXAMS</p>
<p>Subject module will be taken parallel to the chapters every month</p>	

MONTH/ SUBJECT	MATHEMATICS - 041
MARCH	<p>Ch-1 Real Numbers, Ch-2 Polynomials SEA/ELA : Prime Factorization Challenge Students will find HCF and LCM of their age and roll numbers by prime factorization (twice ,thrice ... can be used) and then explain the steps in their own words. And they will find relation between LCM, HCF and two numbers. AIL: Polynomial Story Builder Students will create short real-life stories (profit–loss, area, speed) and represent them using polynomial expressions, followed by peer discussion.</p>
APRIL	<p>Ch-3 Pair of Linear Equations in Two Variables Ch -4 Quadratic Equations, Ch-6 Triangles SEA/ELA : Real-World Application Challenges Student will use quadratic equations in real life situations Example:“A rectangular garden area is 77 m². Its length is 4 m more than its width. Find its dimensions.” Solve by factorisation or quadratic formula Interpret only the positive root for real measurement. This shows why quadratic equations matter beyond the textbook. AIL: Decorate Artistically Students will transform the graphs into art pieces by Coloring the areas between lines and adding themes (e.g., landscapes, abstract designs). They will use arrows or symbols to show intersection, parallelism and coincidence Students will creatively label intersection point. Skills Developed: Number System Understanding, logical and sequential thinking.</p>
MAY	<p>Ch-5 Arithmetic Progressions,Ch-7 Coordinate Geometry SEA/ELA : AP Story Problem Hunt” Divide class into small groups.Each group picks one real-life scenario and builds it into an AP problem.Examples (we can give these or have students think of their own).For eg. 1.A taxi fare where the fare increases by a fixed amount each km. 2. annual salary with a fixed increment. Write down what the first term a is.,Find the common difference d. Form the AP sequence. , Using the formula</p>

MAY	<p>AIL: Coordinate Rangoli Students will create a rangoli design on graph paper by plotting coordinates and joining points to form artistic patterns. Skills Developed: Measurement Skills ,Graphical Understanding, Real Life Application</p>
JULY	<p>Ch-8 Introduction to Trigonometry Ch-9 Some Applications of Trigonometry SEA/ELA : Shadow & Height Exploration Students will experimentally determine the height of nearby objects using shadows, angles, and trigonometric ratios. AIL: Concept building and Reasoning - Students will create a trigonometric ratio table using right angle triangle models and then Create a flower / wheel / staircase chart. Write angles (0°, 30°, 45°, 60°, 90°).Fill sin, cos, tan values using colors and symbols.</p>
AUGUST	<p>Ch-14 Probability SEA/ELA : Logical reasoning and prediction based – Probability kit will be shown by teachers and students will apply concept from probability to solve problems on the likelihood of everyday events. Skills Developed: Visualization , Real Life Application, Measurement & Estimation REVISION FOR FIRST TERM ASSESSMENT</p>
SEPTEMBER	<p>Ch-10 Circles, Ch-11 Area Related To Circles AIL: Design a Smart Park Students will design a circular park layout and calculate areas, paths, and boundaries using circle concepts. Skills Developed: Visualization , Real Life Application</p>
OCTOBER	<p>Ch-12 Surface Areas And Volumes, Ch-13 Statistics SEA/ELA : SEA/ELA : Math in My Bag Students will analyze everyday objects (bottles, boxes, cans) to calculate surface area and volume. AIL : Data Speaks Project Students will collect, organize, and interpret real data through graphical and statistical measures to draw meaningful conclusions.</p>
NOVEMBER - FEBRUARY	<p>DOUBT CLASSES , PRACTICE PAPERS AND REVISION FOR PRE-BOARD & BOARD EXAMS</p>
<p align="center">Subject module will be taken parallel to the chapters every month</p>	

MONTH/ SUBJECT	ACTIVITIES FOR MATHS LAB
MARCH	1.To verify the conditions for consistency for a pair of linear equations in two variables by graphical method
APRIL	1.To verify Basic Proportionality Theorem (Thales Theorem). 2. To establish the criteria for similarity of two triangles.
MAY	1.To identify arithmetic progressions in some given lists of numbers (patterns) 2. To establish a formula for the sum of first n terms of an arithmetic progressions 3. To find the sum of first n natural numbers 4. To find the sum of first n odd natural numbers.
JULY	1. To verify the distance formula by graphical method. 2. To verify section formula by graphical method 3. To find the height of a building using a clinometer.
AUGUST	1. To verify experimently that the tangent at any point a circle is perpendicular to the radius through that point. 2. To find the number of tangents from a point to the circle. 3. To verify that the lengths of tangents to a circle from some external point are equal. 4. To obtain formula for area of a circle experimentally.
OCTOBER	1. To determine experimently probability of 1,2,3,4,5 or 6 by throwing a dice 500 times and compare them with their probability. 2. To verify the formula for the volume of a cylinder. 3. To compare two cylinders made from rectangular sheets of same dimensions under the following aspects: a) Curved Surface Area b) Total Surface Areas c) Volumes

MONTH/ SUBJECT	REASONING WORKBOOK
MARCH	Ch-1 Series Completion (Verbal) Ch-2 Analogy (Verbal) Ch-14 Series (Non-Verbal) Ch-15 Analogy (Non-Verbal) Ch-16 Classification (Non-Verbal)
APRIL	Ch-3 Classification (Verbal) Ch-4 Coding- Decoding (Verbal) Ch-17 Analytical Reasoning (Non-Verbal)

MAY	Ch-5 Blood Relations (Verbal) Ch-6 Puzzle Test (Verbal) Ch-19 Spotting Out the Embedded Figure and.. (Non -Verbal) Ch-20 Figure Matrix (Non -Verbal) Ch-18 Mirror and Water Images (Non-Verbal)
JULY	Ch-7 Sequential Output Tracing (Verbal) Ch- 8 Direction Sense Test (Verbal) Ch-21 Paper Folding & Paper Cutting (Non-Verbal) Ch-22 Grouping of Identical Figures (Non- Verbal) Ch-23 Cubes and Dice (Non-Verbal)
AUGUST	Ch-9 Logical Venn Diagrams (Verbal) Ch -10 Alphabet Test and Logical Sequence of Words (Verbal) Ch-24 Dot Situation (Non-Verbal) Ch-25 Construction of Squares & Triangles (Non- Verbal)
OCTOBER	Ch-11 Alpha-Numeric, Number, Ranking..... (Verbal) Ch-12 Mathematical Operations (Verbal) Ch-13 Inserting The Missing Character (Verbal) Ch-26 Figure Formation and Analysis (Non-Verbal)
MONTH/ SUBJECT	SCIENCE Subject Code- 086
MARCH	Ch-1 Chemical Reactions & Equations, Ch-11 Electricity SEA/ELA : THINK–PAIR–SHARE – Predict the Reaction: Students will predict outcomes when substances are mixed, discuss observations, and verify through teacher demonstration. AIL : Circuit Art Posters - Students will design posters showing series and parallel circuits using colorful symbols and creative layouts. They can represent electrons as characters moving through wires. Skills Developed: Development of scientific reasoning and prediction skills, Creativity.
APRIL	Ch-5 Life Processes, Ch-2 Acid, Bases and Salts, Ch-13 Our Environment SEA/ELA: Quiz & Puzzle- Teacher will organize a quiz competition on digestion, respiration, transportation, and excretion. Crossword puzzles or riddles based on terms like “alveoli,” “chlorophyll,” “peristalsis” will be included. AIL : Poster & Collage Creation: Students will design posters on themes like “Plastic-Free Earth”, “Save Biodiversity”, or “Reduce, Reuse, Recycle”.

<p>APRIL</p>	<p>They will use newspaper clippings or magazine cut-outs to depict environmental challenges and solutions. Skills Developed: Scientific Communication, Analytical Skill</p>
<p>MAY</p>	<p>Ch- 9 Light – Reflection and Refraction Ch- 10 Human Eye and The Colourful World SEA/ELA: Laser Refraction Experiment-Teacher will use a laser pointer and transparent glass blocks to show bending of light. Students will measure angles of incidence and refraction to verify Snell’s Law. AIL : Model Making Create 3D models of the human eye using clay, cardboard, or recycled materials. Build working models of spectacles or prisms to demonstrate correction of vision and dispersion of light. Skills Developed: Scientific communication, Creativity and Innovation.</p>
<p>JULY</p>	<p>Ch-3 Metals and Non-Metals Ch-6 Control and its Coordination SEA/ELA :Oxide Nature Experiment Race- Students in teams will test different substances (Mg ribbon, sulphur powder, carbon) by burning and dissolving oxides in water. They quickly check with litmus paper to classify oxides as acidic or basic. AIL: Crafts & Models Clay Models: Build 3D models of the brain, spinal cord, or neurons. Represent neural networks with threads connecting different parts of the body.</p>
<p>AUGUST</p>	<p>Ch- 4 Carbon and its compounds SEA/ELA : Everyday Uses of Carbon Compounds Students will prepare a poster / scrapbook / PPT showing: Uses of ethanol, ethanoic acid, soaps, detergents, plastics Chemical names with common uses in daily life AIL : Molecule Makers: Carbon Edition- Students will construct 3D models of carbon chains to understand the concept of catenation in carbon. Skills Developed: Spatial and 3D Visualization Skills, Analytical Skills REVISION FOR FIRST TERM EXAMS</p>

SEPTEMBER	<p>Ch-12 Magnetic Effects of Electric Current SEA/ELA : Magnetic Harmony Students will create magnetic field patterns around a current-carrying conductor using iron filings or coloured sand on a chart or tray. AIL: “Art of Magnetic Fields” Students will create a poster / model / collage to visually represent the magnetic effect produced by electric current. Students may use drawing, clay, paper art, thread work, or waste materials. Skills Developed: Spatial and 3D Visualization Skills, Analytical Skills</p>
OCTOBER	<p>Ch-7 How do Organisms Reproduce? , Ch - 8 Heredity SEA/ELA : Genetic Riddle Contest Students compose riddles or puzzles based on heredity concepts (e.g., “I hide when dominant is around, but show up when two of me are found. Who am I?” → recessive trait). Teacher will conduct a fun quiz session. AIL : Poster Collage Collect magazine cutouts or drawings to make a collage of different organisms and their reproduction methods (plants, animals, microbes). Skills Developed: Observation and Analytical Skills, Social and Health Awareness.</p>
NOVEMBER- FEBRUARY	<p>DOUBT CLASSES, PRACTICE PAPERS & REVISION FOR PREBOARD & BOARD EXAMS</p>
<p>Subject module will be taken parallel to the chapters every month.</p>	

MONTH/ SUBJECT	EXPERIMENTS TO BE CONDUCTED IN SCIENCE LAB
MARCH	<ol style="list-style-type: none"> 1.To perform and observe various chemical reactions and classify them. 2.To verify Ohm’s Law. 3.To find equivalent resistance in series and parallel combinations.
APRIL	<ol style="list-style-type: none"> 1. To find pH of various samples by using pH paper. 2. To study properties of NaOH and HCl. 3. To prepare a temporary mount of leaf peel to show stomata

MAY	<ol style="list-style-type: none"> 1. To show experimentally that carbon dioxide is given out during respiration. 2. To study refraction through glass prism. 3. To find out focal length of concave mirror /convex lens. 4. To trace the path of the rays of light through a glass prism.
JULY	<ol style="list-style-type: none"> 1. To trace the path of rays through a rectangular glass slab for different angles of incidence. 2. To observe the action of Zn , Fe , Cu and Al on various salt solutions and to arrange them in the reactivity series.
AUGUST	<ol style="list-style-type: none"> 1. To study the properties of acetic acid.
OCTOBER	<ol style="list-style-type: none"> 1. To study binary fission in amoeba and budding in yeast. 2. To identify the various parts of embryo of a dicot seed.

MONTH/ SUBJECT	SOCIAL SCIENCE Subject Code- 087
MARCH	<p>History: Ch – 4 The Age of Industrialisation Geography :Ch-1 Resources and Development Civics: Ch-1 Power Sharing Economics: Ch-1 Development SEA/ELA : My Growth Graph-Students will collect real-life data of their own development based on four indicators – Health (BMI), Study Hours, Family Income Pattern and Digital Access. They will calculate their Personal Development Index (PDI), prepare a bar graph, compare it with India’s HDI, and identify development gaps. AIL : Soil Smart – Our Life Line Students will analyze the importance of soil, identify major soil types of India, understand causes of soil degradation, and suggest conservation measures through a poster and slogan. Skills Developed: Analytical Skills, Decision Making SPS SLOT: To identify and mark the major Soil types found in different regions of India.</p>
APRIL	<p>History: Ch-1 The Rise of Nationalism In Europe Civics: Ch-2 Federalism Economics: Ch-2 Sectors of the Indian Economy SEA/ELA : Flow Of Freedom – Unification Trails of Europe Students will prepare a flowchart showing the unification process of European countries — Germany, Italy and Britain. They will design step-by-step visual flowcharts highlighting important events, leaders and treaties, and then present in class. AIL : Making of chart showing Union, State and Local Government structure. Skills Developed: Decision-Making, Analytical Skill</p>

<p>MAY</p>	<p>History :Ch-2 Nationalism In India Geography : Ch-2 Forest and Wildlife Resource, Ch-3 Water Resources Economics :Ch-3 Money and Credit SEA/ELA :Be the Banker –Loan and Flow Students will organise an interactive classroom session where they will act as bankers and borrowers to understand the flow of money, the process of lending, and the impact of credit on the economy. AIL: Create a 3D model of rainwater harvesting in India. Skills Developed: Critical Thinking, Analytical Skills SPS SLOT:1. To locate and label the places associated with major events of Indian National Movement and Congress sessions. 2.To identify and label the major dams and reservoirs of India. Project Work: Consumer Awareness OR Social Issues OR Sustainable Development</p>
<p>JULY</p>	<p>Geography: Ch-4 Agriculture, Ch-7 Life Lines of Indian Economy (Map Only) History :Ch-5 Print Culture and the Modern World Civics: Ch-3 Gender, Religion and Caste SEA/ELA: Make a survey on gender roles in society. AIL : Printed Voices – The Power Of The Press Students will create vintage newspaper inspired by the print culture of the 19th–20th century. They will select a theme such as social reform, women education etc. Skills Developed: Analytical Skills, Thinking Skills, Artistic Skills SPS SLOT: 1. To identify and mark the major crop-producing regions in India. 2. To locate & label the places known for rice, wheat, and sugarcane cultivation. 3. To identify and label the major seaports and airports of India.</p>
<p>AUGUST</p>	<p>Civics : Ch-4 Political Parties Geography :Ch-5 Minerals and Energy Resources Economics :Ch-4 Globalization and the Indian Economy SEA/ELA: Mock Parliament: Check and Balance Students simulate a parliament session to show how opposition parties hold the government accountable. AIL: Prepare a creative chart on renewable and non-renewable energy. Skills Developed: Decision making, Technical Analysis</p>

AUGUST	<p>Civics : Ch-4 Political Parties Geography :Ch-5 Minerals and Energy Resources Economics :Ch-4 Globalization and the Indian Economy SEA/ELA : Mock Parliament: Check and Balance Students simulate a parliament session to show how opposition parties hold the government accountable. AIL : Prepare a creative chart on renewable and non-renewable energy. Skills Developed: Decision making, Technical Analysis SPS SLOT:1. To mark and label the major mineral resources of India. 2. To identify and label the regions with significant coal, iron, and petroleum reserves. 3. To locate and mark the major thermal & Nuclear power plants in India. REVISION FOR FIRST TERM EXAMS</p>
SEPTEMBER	<p>Civics : Ch-5 Outcomes of Democracy SEA/ELA : Debate: Is Democracy successful in India? Skills Developed: Critical Thinking</p>
OCTOBER	<p>History:Ch-3 The Making of a Global World Geography: Ch-6 Manufacturing Industries AIL: Design logos for industries located in different states in India. Skills Developed: Analytical Skill, Artistic Skills SPS SLOT: To identify and label the major cotton textile mills, iron and steel plants and software technology parks in India</p>
NOVEMBER-FEBRUARY	<p>DOUBT CLASSES, PRACTICE PAPERS & REVISION FOR PREBOARD & BOARD EXAMS</p>
<p>Subject module will be taken parallel to the chapters every month</p>	

MONTH/ SUBJECT	ARTIFICIAL INTELLIGENCE Subject Code- 417
MARCH	<p><u>PART- B SUBJECT SPECIFIC SKILLS</u> Unit-I Revisiting AI Project Cycle & Ethical Frameworks for AI SEA/ELA : “Responsible AI Case Study Discussion” Students will analyse simple real-life case studies related to the use of AI (such as facial recognition, recommendation systems, or chatbots). They will discuss how data is collected and used, Possible ethical concerns, Responsible use of AI. Practical: Area of Rectangle, Triangle & Square. Students will take input from user and by using of mathematical function they will find the cube of the number and add all them AIL- Students will create a poster / chart / infographic representing the stages of the AI Project Cycle. Visual symbols showing ethical values such as fairness, transparency, and responsibility. Skills Developed- Communication Skill, Critical Thinking</p>
APRIL	<p><u>PART- B SUBJECT SPECIFIC SKILLS</u> Unit- II Advanced Concepts of Modeling in AI <u>PART- A EMPLOYABILITY SKILLS</u> Unit-I Communication Skill-II Practical: Simple Decision-Making Program Write a program to take age as input from the user and use a conditional statement to check whether the person is eligible to vote. If the age is 18 years or above, display “Eligible to vote”; otherwise, display “Not eligible to vote” AIL: “Communication Through Visual Storytelling” Students will create a short comic strip / poster / storyboard which depict situations showing effective and ineffective communication Highlight the role of verbal, non-verbal, and visual communication.. Skills Developed- Communication Skill, Creative Thinking, Observation Skill.</p>
MAY	<p><u>PART- A EMPLOYABILITY SKILLS</u> Unit-II Self- Management Skill-II, <u>Unit- III</u> ICT Skill-II SEA/ELA : Data Collection & Visualization Students will collect classroom data such as favorite subjects or attendance and represent it using appropriate graphs to understand patterns. AIL-Independent Working Ability Students will create a poster or drawing using symbols and colours to depict one self-management skill and briefly explain how it helps in their daily student life. Skills Developed -Time Management, Creativity, Decision-Making</p>

JULY	<p>Unit-III Evaluating Models (Part-B) Unit-IV Self management-II (Part-A) SEA/ELA : "AI Bias Investigation" Task: Research bias in AI models (e.g., facial recognition errors) and present findings. Practical: Rock, Paper, Scissor Program allows the user to play Rock, Paper, Scissors against the computer. The user and the computer each choose one of the three options (rock, paper, or scissors), and the program determines the winner based on the classic rules of the game.</p>
AUGUST	<p>Unit- V Computer Vision (Part-B) Unit-V Green Skills-II (Part-A) SEA/ELA : "Speech-to-Text AI" Students will use speech recognition tools such as the Google Speech API to convert spoken language into text and evaluate the accuracy of the output. AIL-Vision-Based Computing Students will create a drawing/poster showing how computers “see” and recognize images (face recognition, traffic signs, object detection) and will explain the process using simple visuals and labels. Skills developed- Digital Literacy, Analytical Thinking, Creativity, Observation Skills Practical: Password Strength Checker Students will evaluate the strength of a password based on certain criteria such as length, presence of uppercase letters, lowercase letters, digits, and special characters.</p>
SEPTEMBER	REVISION FOR FIRST TERM EXAMS
OCTOBER	<p>Unit- VI Natural Language Processing Unit- VII Advanced Python SEA/ELA : "Build an AI-Based Quiz App" Students will design and develop a simple AI-powered quiz application that generates questions based on user input, fostering problem-solving and computational thinking skills.. Practical: Canva Posters</p>
NOVEMBER- FEBRUARY	DOUBT CLASSES, PRACTICE PAPERS & REVISION FOR PREBOARD & BOARD EXAMS
Discussion of MCQ Assignments will be taken parallel to the chapters every month.	

EK BHARAT SHRESHTHA BHARAT INITIATIVE
ART INTEGRATION
STATE INTEGRATION: MANIPUR

SUBJECT	TOPIC
ENGLISH	<p>Roots of the Hills Students journey into the heart of Manipur through stories and voices of its people. They will read, write, and perform short narratives, monologues, or skits inspired by Manipuri folklore, tribal life, and community traditions. Emphasis will be laid on character portrayal, dialogue writing, values of harmony, and respect for nature. Integration: Literature, Drama, Life Skills Outcome: Enhanced creative writing, empathy, and spoken English skills.</p>
HINDI	<p>Lok Sanskriti ki Abhivyakt छात्र मणिपुर की लोक-संस्कृति, पर्व-त्योहार, वेशभूषा एवं जीवन-शैली पर कविता, अनुच्छेद अथवा संवाद लेखन करेंगे। भाव-अभिव्यक्ति के साथ-साथ राष्ट्रीय एकता और सांस्कृतिक विविधता को रचनात्मक रूप में प्रस्तुत किया जाएगा। समन्वय: भाषा, संस्कृति, अभिव्यक्ति परिणाम: भाषा-दक्षता, कल्पनाशक्ति और सांस्कृतिक समझ का विकास।</p>
MATHEMATICS	<p>Patterns Woven in Tradition Learners will discover mathematics hidden in Manipuri textiles, handicrafts, and architectural designs. They will identify symmetry, geometric patterns, ratios, and tessellations used in traditional weaving and artwork, and recreate them mathematically. Integration: Geometry, Art Outcome: Logical reasoning, visualisation, and real-life application of mathematics..</p>

<p>SCIENCE</p>	<p>Nature's Balance in Manipur Students will study Manipur's rich biodiversity, endemic species, and eco-friendly lifestyles of tribal communities. Topics such as sustainable agriculture, medicinal plants, and conservation practices will be linked with scientific concepts. Integration: Biology, Environmental Science Outcome : Environmental awareness, scientific inquiry, and sustainable thinking.</p>
<p>SOCIAL SCIENCE</p>	<p>Manipur: Land, Life & Legacy Students will explore Manipur's geography, history, tribal communities, and cultural heritage through research-based projects. Using maps, charts, and timelines, they will connect physical features with cultural practices and historical developments. Integration: Geography, History, Civics Outcome: Research skills, analytical thinking, and appreciation of regional diversity.</p>
<p>ARTIFICIAL INTELLIGENCE</p>	<p>Digital Manipur Using digital tools, students will design posters, presentations, or short videos showcasing Manipur's culture, festivals, crafts, and natural beauty. AI tools may be used for creative design, storytelling, or cultural data presentation. Integration: Technology, Creativity Outcome: Digital literacy, innovation, and responsible use of technology.</p>



ACADEMIC CALENDAR 2026-27

March 2026

S	M	T	W	T	F	S
1	2	3	4	5	6	7
8	9	10	11	12	13	14
15	16	17	18	19	20	21
22	23	24	25	26	27	28
29	30	31				

Important Days

04 : Holi
 08 : International Women's Day
 20 : Id-ul-Fitr
 22 : World Water Day
 26 : Ram Navami

April 2026

S	M	T	W	T	F	S
			1	2	3	4
5	6	7	8	9	10	11
12	13	14	15	16	17	18
19	20	21	22	23	24	25
26	27	28	29	30		

Important Days

03 : Good Friday
 07 : World Health Day
 14 : Baisakhi / Dr. B.R. Ambedkar Jayanti
 22 : Earth Day
 29 : International Dance Day

May 2026

S	M	T	W	T	F	S
					1	2
3	4	5	6	7	8	9
10	11	12	13	14	15	16
17	18	19	20	21	22	23
24	25	26	27	28	29	30
31						

Important Days

01 : International Labour Day
 07 : World Athletics Day
 10 : Mother's Day
 31 : World No Tobacco Day

June 2026

S	M	T	W	T	F	S
	1	2	3	4	5	6
7	8	9	10	11	12	13
14	15	16	17	18	19	20
21	22	23	24	25	26	27
28	29	30				

Important Days

05 : World Environment Day
 07 : World Food Safety Day
 21 : Father's Day
 21 : Int. Day of Yoga / World Music Day

July 2026

S	M	T	W	T	F	S
			1	2	3	4
5	6	7	8	9	10	11
12	13	14	15	16	17	18
19	20	21	22	23	24	25
26	27	28	29	30	31	

Important Days

01 : National Doctor's Day
 03 : International Plastic Bag Free Day
 28 : World Nature Conservation Day
 29 : International Tiger Day

August 2026

S	M	T	W	T	F	S
						1
2	3	4	5	6	7	8
9	10	11	12	13	14	15
16	17	18	19	20	21	22
23	24	25	26	27	28	29
30	31					

Important Days

15 : Independence Day
 19 : World Photography Day
 28 : Raksha Bandhan / World Sanskrit Day
 29 : National Sports Day

ACADEMIC CALENDAR 2026-27

September 2026

S	M	T	W	T	F	S
		1	2	3	4	5
6	7	8	9	10	11	12
13	14	15	16	17	18	19
20	21	22	23	24	25	26
27	28	29	30			

Important Days

04 : Janmashtami
05 : Teacher's Day
08 : International Literacy Day
14 : Hindi Diwas

October 2026

S	M	T	W	T	F	S
				1	2	3
4	5	6	7	8	9	10
11	12	13	14	15	16	17
18	19	20	21	22	23	24
25	26	27	28	29	30	31

Important Days

02 : Gandhi Jayanti / Lal Zachary Shastri Jayanti
08 : Indian Air Force Day
11 : International Day of the Girl Child
20 : Dussehra
31 : National Unity Day

November 2026

S	M	T	W	T	F	S
1	2	3	4	5	6	7
8	9	10	11	12	13	14
15	16	17	18	19	20	21
22	23	24	25	26	27	28
29	30					

Important Days

08 : Diwali
11 : National Education Day
14 : Children's Day
24 : Guru Nanak Jayanti
26 : Constitution Day

December 2026

S	M	T	W	T	F	S
		1	2	3	4	5
6	7	8	9	10	11	12
13	14	15	16	17	18	19
20	21	22	23	24	25	26
27	28	29	30	31		

Important Days

02 : World Computer Literacy Day
04 : Indian Navy Day
14 : World Energy Conservation Day
22 : National Mathematics Day
25 : Christmas Day

January 2027

S	M	T	W	T	F	S
					1	2
3	4	5	6	7	8	9
10	11	12	13	14	15	16
17	18	19	20	21	22	23
24	25	26	27	28	29	30
31						

Important Days

10 : World Hindi Day
12 : National Youth Day
15 : Indian Army Day
23 : Parakram Diwas
26 : Republic Day

February 2027

S	M	T	W	T	F	S
	1	2	3	4	5	6
7	8	9	10	11	12	13
14	15	16	17	18	19	20
21	22	23	24	25	26	27
28						

Important Days

11 : Basant Panchami
21 : International Mother Language Day
28 : National Science Day

LIST OF HOLIDAYS FOR ACADEMIC SESSION 2026–27

14 APR 2026	Vaisakhi / Ambedkar Jayanti Tuesday	27 MAY 2026	ID-UL-Zuha (Bakrid) Wednesday
15 AUG 2026	Independence Day Saturday	28 AUG 2026	Raksha Bandhan Friday
04 SEP 2026	Janmashtami Friday	02 OCT 2026	Mahatma Gandhi Jayanti Friday
20 OCT 2026	Dussehra Tuesday	29 OCT 2026	Karwa Chauth Thursday
01 NOV 2026	Haryana Day Sunday	24 NOV 2026	Guru Nanak Jayanti Tuesday
25 DEC 2026	Christmas Day Friday	26 JAN 2027	Republic Day Tuesday
06 MAR 2027	Maha Shivratri Saturday	10 MAR 2027	ID-UL-Fitar Wednesday
22 MAR 2027	Holi Monday		

SUMMER VACATION

01 June — 30 June
2026

DEEPAWALI BREAK

08 Nov — 11 Nov
2026

WINTER BREAK

01 Jan — 15 Jan 2027

A LEARNER'S PROMISE

**I will learn with curiosity,
act with integrity,
respect others,
take responsibility,
and strive to be my best every day.**

